

FOR LEASE

PRINGLE ROAD WAREHOUSE

2475 Pringle Rd SE
Salem, OR 97302



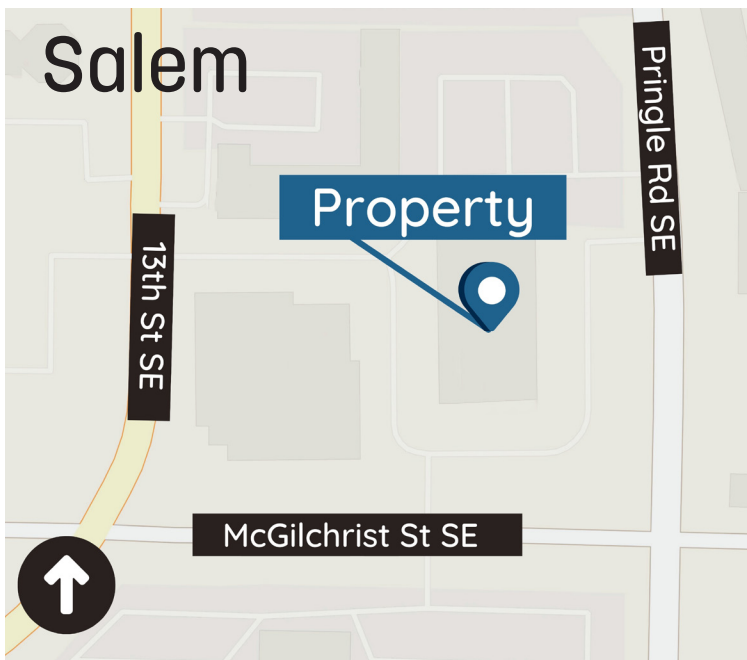
Imagine working in a perfect space.

Location

- Centrally located, this corner site is ideally situated with easy access from all directions. Five minutes to downtown Salem or Interstate 5

Project Highlights

- Approx. 10,840 SF industrial building including approx. 2,261 SF of office/showroom
- Intersection of Pringle and McGilchrist with access from both streets
- Two grade level doors
- 3 phase power
- Four offices, conference and break rooms
- Professionally owned and managed by Pacific NW Properties
- Please call for competitive pricing and additional info



For more information, please contact:
Mitch Page or Evan Bernstein
503-626-3500
mitch.page@pnwprop.com
evan.bernstein@pnwprop.com

pnwprop.com

PACIFIC NW
PNW PROPERTIES

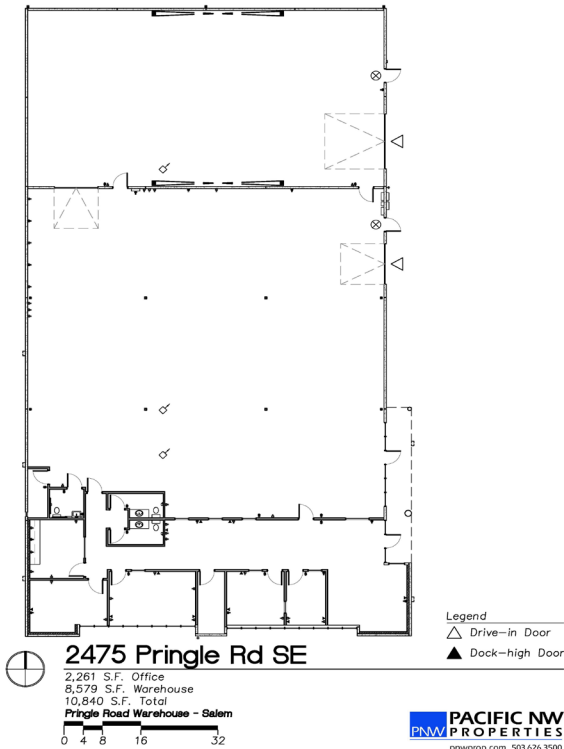
FOR LEASE

PRINGLE ROAD WAREHOUSE
2475 Pringle Rd SE
Salem, OR 97302

Because great people should have
great places.



Site Plan



For more information, please contact:
Mitch Page or Evan Bernstein
503-626-3500
mitch.page@pnwprop.com
evan.bernstein@pnwprop.com

The information contained herein is believed to be accurate but is not warranted as to its accuracy and may change or be updated without notice.

PACIFIC NW PROPERTIES